



A MIDSUMMER NIGHT'S DREAM

WILLIAM SHAKESPEARE

STAGE 2
A2
YOUNG ADULT READERS

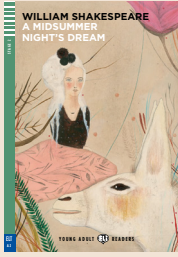
ACTIVITIES

- 1** Here are some rules from a school in Lilliput. Can you correct them? Use the words in the box to help you..

beautiful - incredible - fall - magic - someone
trouble - wild - young

Oberon. I know a place where the **1** thyme grows. There are **2** wild flowers there, too. Their colours are beautiful and the perfume is **3** Titania often sleeps there. I'll put some **4** juice in her eyes. And then she'll be in **5** Now, Puck, you take some juice too. I saw an Anthenian lady with a **6** man just now. She loves him very much, but he doesn't love her. Find them in the woods. Put some juice on his eyes, too. Then, he'll **7** in love with her. Let's make **8** happy.

ANSWERS: 1 wild; 2 beautiful; 3 incredible; 4 magic; 5 trouble; 6 young; 7 fall; 8 someone.



A MIDSUMMER NIGHT'S DREAM

WILLIAM SHAKESPEARE

STAGE 2
A2
YOUNG ADULT READERS

ACTIVITIES

2 True or false?

T F

- 1 A Midsummer night's dream is a funny story about people in love.
- 2 Puck is a magical fairy, who thinks it is funny to make problems for people.
- 3 Nick Bottom gets the head of a donkey because he is so intelligent.
- 4 Lysander loves Hermia, but Hermia loves Puck.
- 5 Demetrius loved Helena, but now loves Hermia.
- 6 Titania, Queen of the Fairies, falls in love with Bottom because of magic.



A MIDSUMMER NIGHT'S DREAM

WILLIAM SHAKESPEARE

STAGE 2
A2
YOUNG ADULT READERS

TEST YOURSELF

KEY (KET) – Writing

Read the meanings and then write the word from the description.
There is one space for each letter.

When a person makes a mistake and you think it is funny.

laugh at

- 1 The people who sit and watch a play.
- 2 The noise made by a lion.
- 3 An animal or plant in nature.
- 4 Idea or decision to do something.
- 5 To touch an animal, eg dog or cat, kindly.
- 6 Place where two roads meet.

a _ _ _ _ s _ _ _ d _

b _ _ _ _ k _

c a _ _ _ _ _ _

d _ _ _ d

e p _ _ _

f _ _ a _



A MIDSUMMER NIGHT'S DREAM WILLIAM SHAKESPEARE

STAGE 2
A2
YOUNG ADULT READERS

FOCUS ON...

SPECIAL EFFECTS DURING SHAKESPEARE'S THEATRE

Bloody special effects were used to arouse the enthusiasm and surprise the audience. The simplest one was a handkerchief wet with blood. Bloody special effects could also be produced to imitate wounds and injuries.

Moreover, the famous Globe Theatre used canons as Special Effects. The cannon was useful to create a dramatic special effect such as announcing great entrances especially in the William Shakespeare's plays. The cannon was loaded with gunpowder and wadding giving the opportunity to reproduce the sounds of the battlefield.